

Características

Renda Fixa CDI	48,87%
Renda Fixa Inflação	36,24%
Fundos de Participações	5,69%
Renda Variável	4,66%
Fundo Imobiliário	1,76%
Internacional Europa	1,65%
Internacional Global	0,93%
Empréstimos	0,20%



Política de Investimentos: Investe os recursos, principalmente, em cotas de fundos que atuam em diversos mercados, sem o compromisso de concentração em fator de risco específico.

Meta Prevcom:
 IPCA+5% até 04/20
 IPCA+4% até 12/24
 IPCA+4,5% 2025

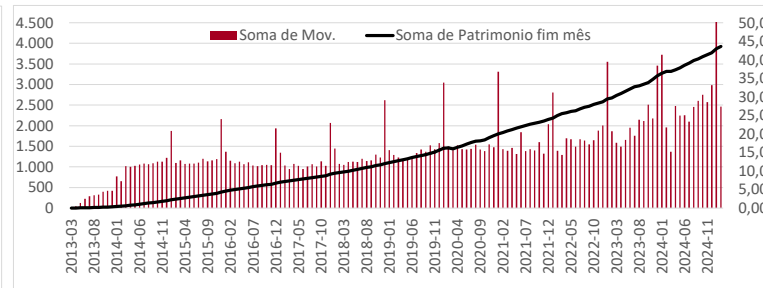
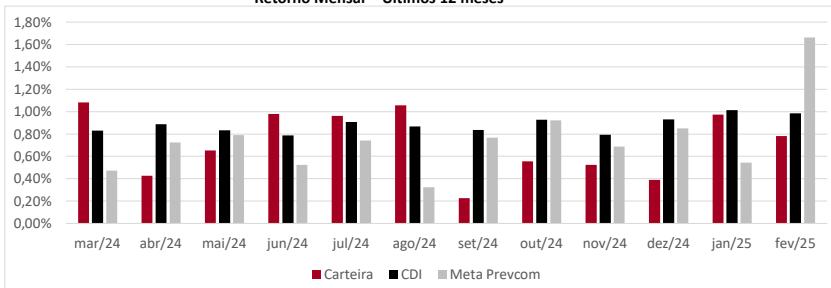
Retorno (%)

	Ano	12 meses	24 meses	36 meses	Início
Carteira	1,74%	8,86%	22,57%	32,12%	247,49%
CDI	2,01%	11,13%	25,28%	41,58%	191,78%
IPCA	1,47%	5,06%	9,78%	15,93%	96,79%
Meta Prevcom	2,22%	9,38%	18,80%	30,46%	237,11%
IMA-B5	2,55%	7,49%	18,71%	32,45%	224,32%
Poupança	1,31%	7,25%	15,65%	25,07%	103,04%
IBOVESPA	2,09%	-4,82%	17,03%	8,54%	109,76%
MSCI World	-3,06%	33,83%	57,44%	45,31%	693,35%
MSCI Europe	4,46%	27,11%	33,29%	29,80%	340,62%

* Cf. MP 567/12

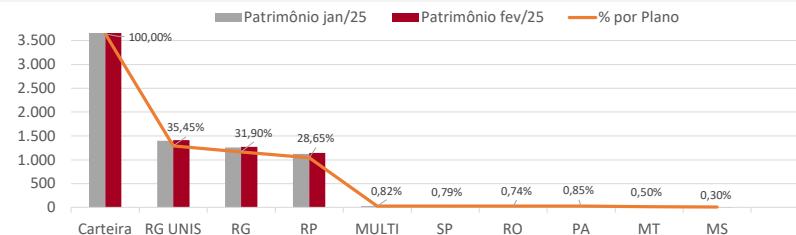
Gráficos

Retorno Mensal - Últimos 12 meses



Carteira

	Patrimônio jan/25	Patrimônio fev/25	% por Plano
Carteira	3.928,43	3.986,34	100,00%
RG UNIS	1.398,10	1.413,04	35,45%
RG	1.259,72	1.271,56	31,90%
RP	1.122,18	1.142,01	28,65%
MULTI	32,12	32,79	0,82%
SP	30,06	31,56	0,79%
RO	27,73	29,32	0,74%
PA	28,42	33,81	0,85%
MT	18,49	20,12	0,50%
MS	11,62	12,12	0,30%





: LÂMINA MENSAL

fevereiro de 2025

Retorno Mensal (%)	fev/25	jan/25	dez/24	nov/24	out/24	set/24	ago/24	jul/24	jun/24	mai/24	abr/24	mar/24
Carteira	0,78%	0,97%	0,39%	0,52%	0,56%	0,23%	1,06%	0,96%	0,98%	0,65%	0,43%	1,08%
CDI	0,99%	1,01%	0,93%	0,79%	0,93%	0,84%	0,87%	0,91%	0,79%	0,83%	0,89%	0,83%
IPCA	1,31%	0,16%	0,52%	0,39%	0,56%	0,44%	-0,02%	0,38%	0,21%	0,46%	0,38%	0,16%
Meta Prevcom	1,66%	0,55%	0,85%	0,69%	0,92%	0,77%	0,32%	0,74%	0,52%	0,79%	0,72%	0,47%
IMA-B5	0,65%	1,88%	-0,28%	0,36%	0,74%	0,40%	0,59%	0,91%	0,39%	1,05%	-0,20%	0,77%
Poupança	0,63%	0,67%	0,58%	0,57%	0,60%	0,57%	0,57%	0,57%	0,54%	0,59%	0,60%	0,53%
IBOVESPA	-2,64%	4,86%	-4,28%	-3,12%	-1,60%	-3,08%	6,54%	3,02%	1,48%	-3,04%	-1,70%	-0,71%
MSCI World	-0,50%	-2,58%	-0,45%	9,45%	3,90%	-2,06%	2,40%	3,59%	8,10%	5,64%	-0,45%	3,25%
MSCI Europe	3,86%	0,58%	-0,25%	2,83%	-0,27%	-3,38%	3,61%	3,98%	3,53%	5,51%	1,01%	3,58%

Composição da Carteira

Retorno Nominal em % | Retorno Relativo ao índice de referência

Performance dos Fundos em Carteira			Mês			Ano		12 meses		Início do investimento		Patrimônio	
Nome	Índice ref.	% PL	Início	Nominal	Relativo	Nominal	Relativo	Nominal	Relativo	Nominal	Relativo	Volatilidade	R\$ milhões
Bela Cintra FI RF	Meta Prevcom	30,65%	13/nov/13	1,07%	-0,59%	1,95%	-0,26%	9,71%	0,32%	253,82%	36,98%	0,49%	R\$ 1.221,68
Itaú Inst Global Dinâmico RF	CDI	7,29%	20/fev/20	0,98%	99,15%	1,97%	97,96%	11,48%	103,13%	56,10%	105,33%	0,54%	R\$ 290,52
Itaú Institucional Optimus RF LP FICFI	CDI	6,21%	29/abr/22	0,78%	79,20%	1,59%	79,00%	12,80%	115,00%	39,93%	102,07%	0,79%	R\$ 247,43
Itaú Institucional RF Referenciado DI	CDI	4,62%	15/fev/24	1,00%	101,80%	2,06%	102,22%	11,38%	102,22%	11,89%	102,56%	0,07%	R\$ 184,03
Itaú Inst BOV11 FIC FIA	Ibovespa	3,68%	04/ago/23	-2,39%	0,26%	2,39%	0,30%	-4,09%	0,74%	3,94%	1,19%	13,83%	R\$ 146,84
Itaú Inst RF Inflação 5 FICFI	IMA-B5	3,55%	19/jun/19	0,64%	-0,01%	2,51%	-0,03%	7,30%	-0,20%	59,09%	-1,72%	2,25%	R\$ 141,45
Itaú Institucionais Legend RF LP Fc	CDI	3,40%	02/out/19	1,24%	125,49%	2,17%	107,91%	14,06%	126,31%	66,50%	118,67%	1,52%	R\$ 135,64
BNP Paribas Cred Inst FICFI RF CP LP	CDI	3,16%	11/out/23	1,04%	105,09%	2,14%	106,47%	11,68%	104,92%	16,95%	106,83%	0,08%	R\$ 125,82
BTGP Economia Real FIP Multi	IPCA+6,5%	3,12%	19/out/20	-0,17%	-1,99%	-0,34%	-2,88%	2,53%	-9,41%	107,74%	32,82%		R\$ 124,50
Bradesco RF Referenciado DI Federal E	CDI	2,89%	12/ago/24	0,96%	97,36%	2,00%	99,38%			6,05%	97,62%	0,06%	R\$ 115,23
Santander RF Ref DI Tit Público Hiper	CDI	2,87%	21/nov/24	0,98%	99,29%	2,05%	102,23%			3,21%	99,64%	0,07%	R\$ 114,22
Sul America Cred Institucional ESG FI R	CDI	2,40%	21/jun/23	1,08%	109,96%	2,24%	111,68%	12,69%	113,97%	25,14%	122,77%	0,28%	R\$ 95,55
XP Corporate Light FI RF CP LP	CDI	2,13%	24/jan/23	1,04%	105,24%	2,11%	105,07%	11,90%	106,90%	28,57%	106,81%	0,27%	R\$ 84,80
Porto Seguro RF DI CP	CDI	1,96%	18/jul/24	1,03%	104,68%	2,11%	105,24%			7,08%	102,52%	0,12%	R\$ 78,09
Itaú Soberano RF Simples LP FICFI	CDI	1,95%	02/set/19	0,98%	99,02%	2,02%	100,41%	11,05%	99,26%	55,86%	98,38%	0,05%	R\$ 77,65
Vot Allianzgi Euro Eq Growth FIM IE	MSCI Europe	1,65%	22/mai/19	-0,45%	-4,31%	0,87%	-3,58%	14,13%	-12,98%	103,55%	5,26%	17,65%	R\$ 65,87
BB RF Referenciado DI Tit Pub	CDI	1,60%	20/fev/25	0,98%	99,37%					0,29%	99,69%	0,06%	R\$ 63,83
Sul América Excellence FI RF CP	CDI	1,59%	24/jan/23	1,02%	103,26%	2,12%	105,50%	12,10%	108,70%	29,41%	109,92%	0,15%	R\$ 63,41
MAG Renda Fixa FI	CDI	1,52%	13/set/23	1,02%	103,47%	2,20%	109,30%	11,10%	99,69%	17,27%	101,68%	0,24%	R\$ 60,61
Bradesco Inst FIC FI RF IMA-B5	IMA-B5	1,50%	16/ago/23	0,62%	-0,03%	2,48%	-0,06%	7,14%	-0,36%	11,48%	-0,56%	2,27%	R\$ 59,89
BTG Pactual Créd Corp I FICFI RF CP	CDI	1,34%	30/ago/21	1,12%	113,73%	2,32%	115,36%	12,37%	111,17%	53,73%	114,23%	0,22%	R\$ 53,33
LFT	CDI	1,28%	05/dez/23	0,73%	74,52%	1,44%	71,88%	9,67%	86,86%	12,58%	90,12%		R\$ 51,17
Inter Corporate RF Crédito Privado	CDI	1,11%	15/mai/24	0,99%	100,42%	2,04%	101,64%			8,95%	101,62%	0,07%	R\$ 44,41
BTG Pactual Explorer Inst FI RF LP	CDI	0,95%	13/mar/24	0,97%	98,28%	2,03%	101,15%			8,04%	75,10%	1,25%	R\$ 37,90
Schroder Sustent Ações Globais IS IE	MSCI World	0,93%	24/mai/24	-4,06%	-3,56%	-5,03%	-1,97%			16,18%	-8,62%	16,93%	R\$ 37,16
BTG Pactual Inv de Impacto FIP Mult	IPCA+6,5%	0,91%	30/ago/21	-0,16%	-1,98%	-0,67%	-3,21%	12,76%	0,82%	21,41%	-31,43%	22,02%	R\$ 36,28
AZ Quest Small Mid Caps Inst. FICFIA	SMML	0,66%	09/jun/20	-3,25%	0,61%	-0,56%	-2,56%	-1,27%	17,28%	12,37%	34,49%	9,92%	R\$ 26,48
Capitânia Reit Inst Fc FIM CP	IFIX	0,65%	25/jun/19	1,50%	-1,84%	-0,54%	-0,71%	1,10%	8,20%	53,65%	33,51%	3,88%	R\$ 25,74
Tivio Banks RF Crédito Privado FI	CDI	0,62%	10/nov/23	0,99%	100,37%	2,01%	100,01%	11,47%	103,05%	15,35%	103,79%	0,06%	R\$ 24,58
Santander RF IMA-B5 Premium FICFI	IMA-B5	0,54%	18/dez/23	0,63%	-0,02%	2,51%	-0,04%	7,24%	-0,26%	9,10%	-0,32%	2,25%	R\$ 21,48
Pátria Private Equity Fund VII Feeder I	IPCA+7%	0,47%	28/set/23	-0,06%	-1,92%	-0,16%	-2,78%	19,05%	6,58%	15,03%	-3,33%		R\$ 18,90
BTG Pactual Economia Real II FIPM CLU	IPCA+8%	0,40%	04/mai/23	-0,88%	-2,81%	-1,79%	-4,57%	2,88%	-10,65%	-18,09%	-42,74%		R\$ 15,89
VBI Prime Properties FII	IFIX	0,40%	20/dez/23	8,60%	5,26%	2,33%	2,16%	-18,58%	-11,48%	-16,08%	-13,25%		R\$ 15,82
Spectra VI Institucional FIP Multiestrat	IPCA+8%	0,39%	31/mar/23	4,34%	2,41%	3,54%	0,76%	-11,96%	-25,49%	47,42%	21,17%		R\$ 15,61
Rio Bravo Renda Varejo FII	IFIX	0,37%	20/dez/23	-1,24%	-4,58%	-10,29%	-10,45%	-22,57%	-15,47%	-20,60%	-17,77%		R\$ 14,91
Fator Verita Multiestratégia Imobiliária	IFIX	0,34%	22/jul/24	5,56%	2,22%	-0,21%	-0,38%			-29,76%	-21,81%		R\$ 13,71
Vinci Selection Equities FIA	Ibovespa	0,31%	30/nov/22	-2,41%	0,24%	1,77%	-0,32%	-7,77%	-2,95%	1,96%	-7,21%	13,49%	R\$ 12,36
Perfin Voyager FIP Infra	IPCA+6%	0,15%	13/jun/24	18,01%	16,23%	18,13%	15,67%			84,59%	76,21%	30,50%	R\$ 10,12
Carteira de Empréstimos	CDI	0,20%	05/dez/23	0,73%	74,52%	1,44%	71,88%	9,67%	86,86%	12,58%	90,12%		R\$ 7,87
Vinci Partners IV Feeder	IPCA+6%	0,11%	25/abr/24	-1,49%	-3,27%	5,92%	3,46%			-3,42%	-13,30%		R\$ 4,21
BTG Pactual Infraestrutura III FIP Multi	IPCA+8%	0,03%	02/jul/24	29,63%	27,70%	16,02%	13,24%			-27,30%	-36,56%		R\$ 1,32
											Patrimônio Total:	R\$ 3.986,34	